

# 6840 MAIN STREET, DOWNERS GROVE, IL

LEASING AGENT

**ROBERT TITZER**

312.458.4468

rtitzer@hsacommercial.com

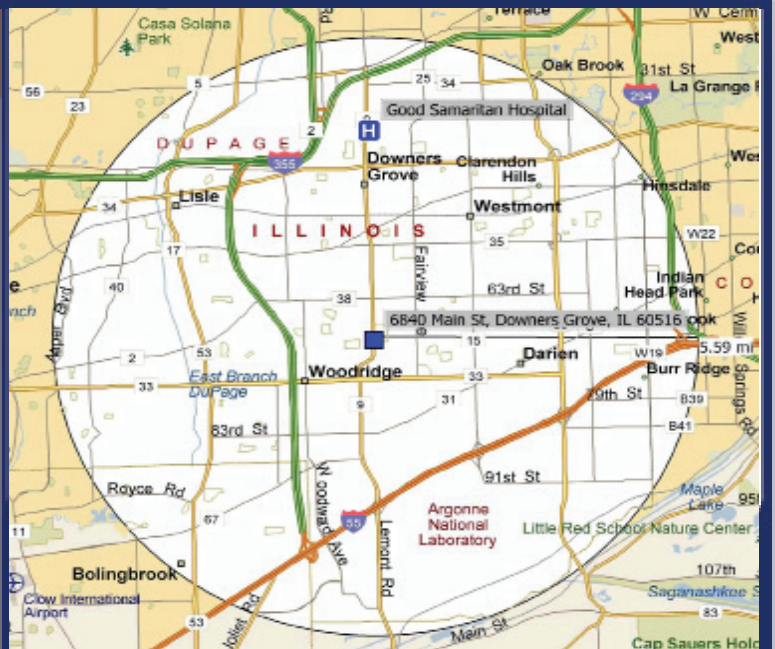


## PROPERTY PROFILE

- New State-of-the-art medical office building

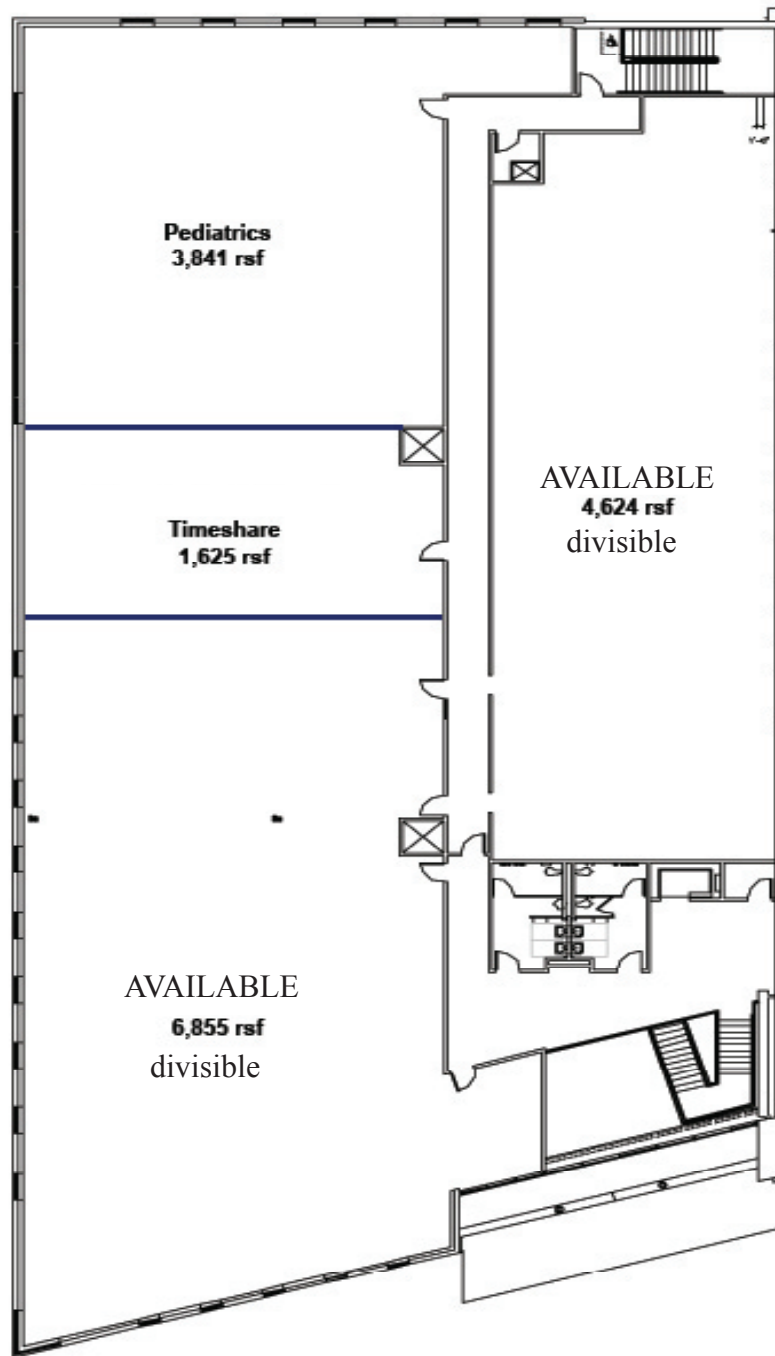
### On-site Services include:

- Urgent Care
  - Cardiac Diagnostics
  - CT Scan
  - MRI
  - Ultrasound
  - Mammography
  - X-Ray
  - Physical Therapy
- New medical and surgical specialty space available
  - High traffic location on Main Street.



- Close to full interchange on major expressways (I-55, I-355, I-88 & I-294) and 3 1/2 miles from Good Samaritan Hospital to the north
- Abundant parking
- Established medical/dental location with frontage on heavily travelled Main Street, just south of downtown Downers Grove

# 6840 MAIN STREET, DOWNERS GROVE, ILLINOIS



6840 Main Street  
Downers Grove, IL  
2nd Floor

**HSA**  
COMMERCIAL REAL ESTATE

**HSA**  
COMMERCIAL REAL ESTATE

233 South Wacker Drive Chicago, IL 60606 [www.hsacommercial.com](http://www.hsacommercial.com)

LEASING AGENT ROBERT TITZER 312.458.4468 [rtitzer@hsacommercial.com](mailto:rtitzer@hsacommercial.com)

Above information is subject to verification and no liability for errors or omissions is assumed. Price subject to change and listing may be withdrawn without notice.