

## 6800 Main Street, Downers Grove, Illinois

LEASING AGENT

**ROBERT TITZER**

312.458.4468

[rtitzer@hsacommercial.com](mailto:rtitzer@hsacommercial.com)



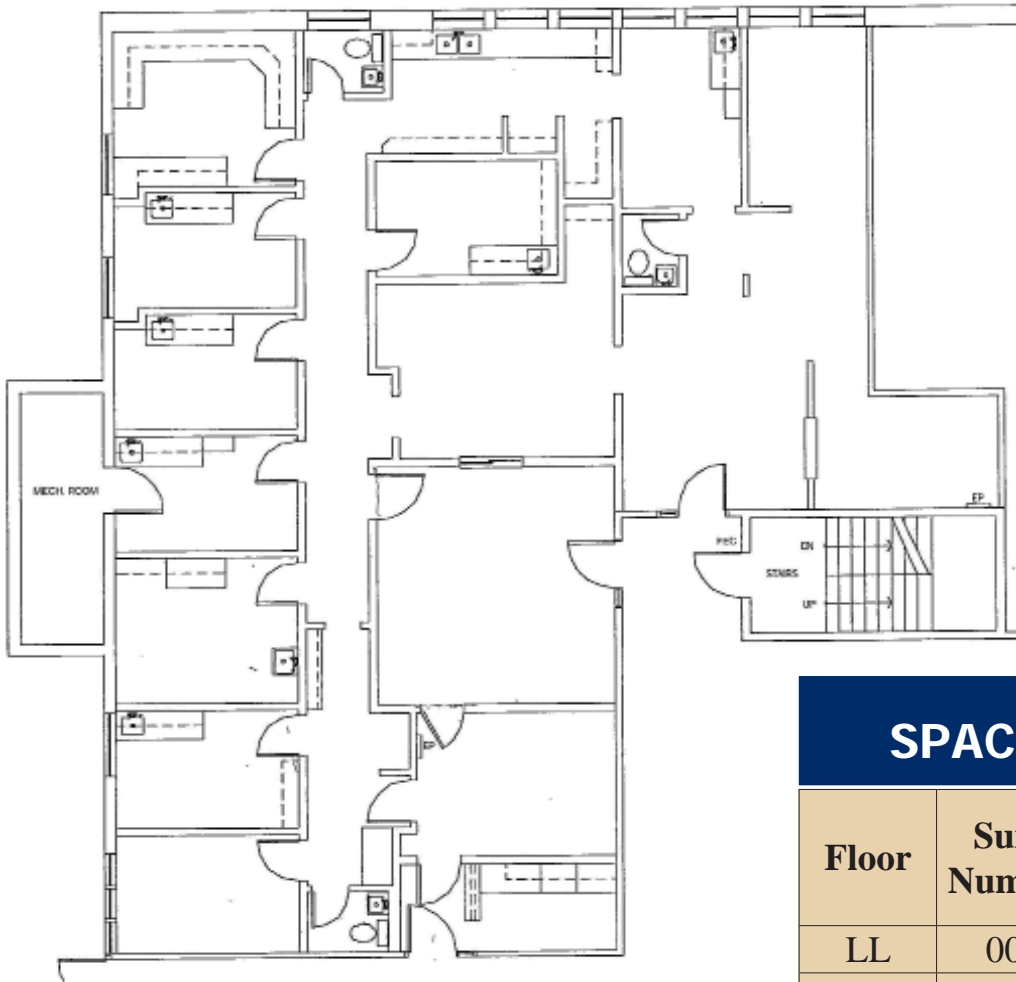
### PROPERTY PROFILE

- On-site Services Include:
  - Urgent Care
  - Cardiac Diagnostics
  - CT Scan
  - MRI
  - Ultrasound
  - Mammography
  - X-Ray
  - Physical Therapy
- New medical and surgical specialty space available
- Rent incentives for existing fully improved medical suites.
- High traffic location on Main Street
- Abundant parking.
- Close to full interchanges on major expressways (I-55, I-355, I-88 & I-294) and 3 1/2 miles from Good Samaritan Hospital to the north.

## MEDICAL/DENTAL PROFESSIONAL OFFICE SPACE AVAILABLE



# 6800 MAIN STREET, DOWNERS GROVE, ILLINOIS



Suite 110  
Floor Plan

## SPACES AVAILABLE

Floor	Suite Number	RSF Available	Gross Rental Rate
LL	004	996	\$15.00
LL	005	589	\$15.00
LL	018	1,435	\$15.00
LL	020	720	\$15.00
LL	016	1,416	\$15.00
1	100	1,202	\$25.50
1	102	1,113	\$25.50
1	110	2,908	\$25.50
2	203	1,293	\$23.50
2	204	731	\$23.50
2	210	383	\$23.50



233 South Wacker Drive Chicago, IL 60606 [www.hsacommercial.com](http://www.hsacommercial.com)

**LEASING AGENT ROBERT TITZER 312.458.4468 [rtitzer@hsacommercial.com](mailto:rtitzer@hsacommercial.com)**

Above information is subject to verification and no liability for errors or omissions is assumed. Price subject to change and listing may be withdrawn without notice.