

LEMONT PROFESSIONAL BUILDING
15900 West 127th Street, Lemont, Illinois

LEASING AGENT

ROBERT TITZER

312-458-4468

rtitzer@hsacommercial.com



SPACES AVAILABLE

FLOOR

SF AVAILABLE

1st Floor	1,860 SF
2nd Floor	3,088 SF
2nd Floor	1,908 SF
2nd Floor	3,216 SF
2nd Floor	1,891 SF
2nd Floor	1,150 SF
2nd Floor	4,327 SF

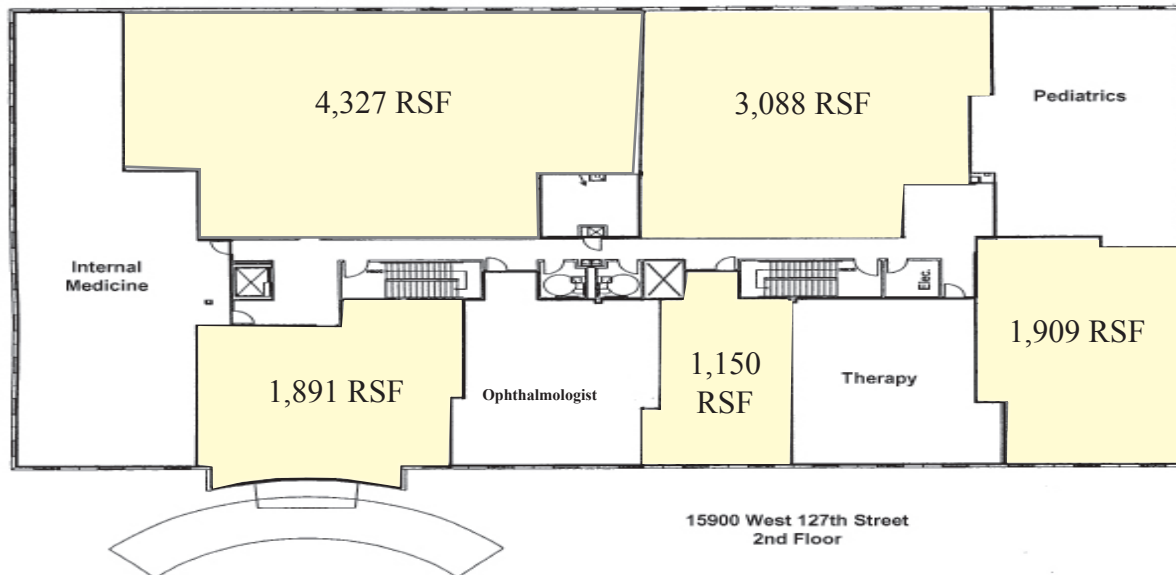
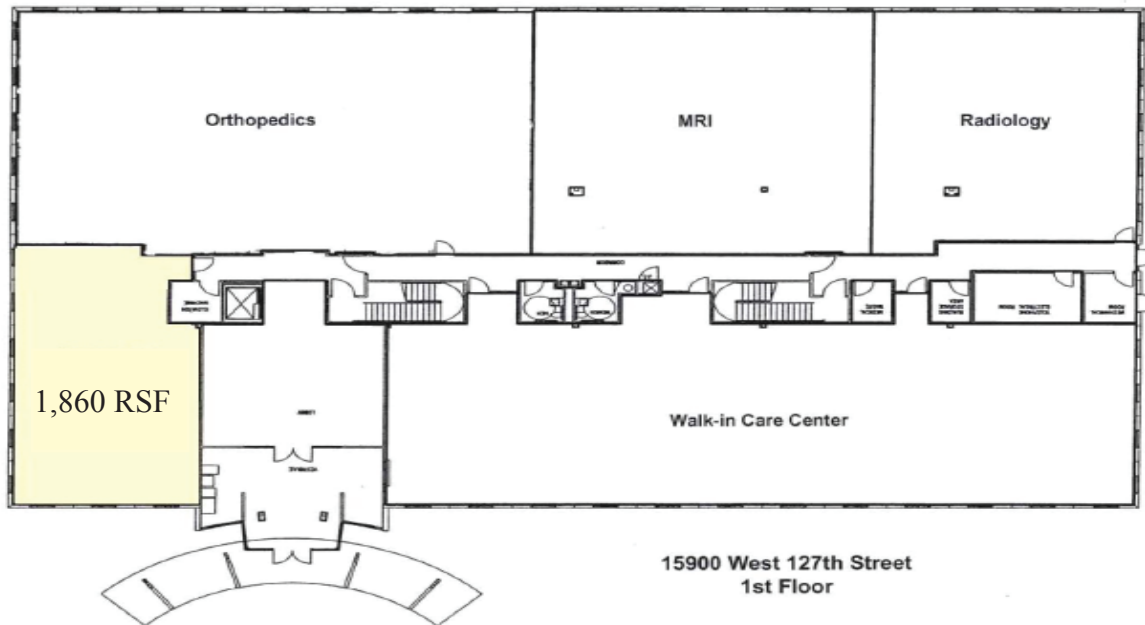
Potential to assemble 12,522 SF of contiguous space.

MEDICAL OFFICE SPACE

- Lemont Professional Center addresses the strong population growth and need for outpatient services and physicians for the residents of the south 355 corridor communities.
- Immediate access to interchange at 127th Street and the new I-355 Extension.
- Beautiful campus setting.
- Fully improved medical and dental suites available.
- Over 200 parking spaces in lighted lot.
- Current medical facilities in the building include: walk-in care center, orthopedics, radiology, MRI, ophthalmology, pediatrics and internal medicine.
- Professionally managed by HSA PrimeCare

LEMONT PROFESSIONAL CENTER

15900 West 127th Street, Lemont, IL



233 South Wacker Drive Chicago, IL 60606 www.hsacommercial.com

LEASING AGENT ROBERT TITZER 312.458.4468 rtitzer@hsacommercial.com

Above information is subject to verification and no liability for errors or omissions is assumed. Price subject to change and listing may be withdrawn without notice.